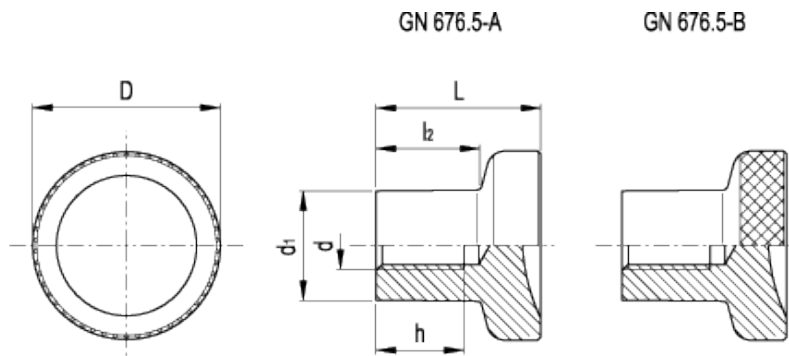


GN 676.5

Knobs



INOX
Stainless Steel



technical informations

Material

AISI 303 stainless steel, sandblasted matte finish.

- Execution A: plain rim.
- Execution B: knurled rim.

Assembly

Tapped blind hole.

Features and applications

AISI 303 stainless steel, thanks to its high resistance to corrosion, allows the application of these handles on machines and equipment in those sectors where laws or particular hygienic, climatic and environmental factors make it mandatory to use corrosion resistant materials.

Ergonomy and design

When used as a push-pull button, the thumb rests naturally on the concave front surface improving the grip. The knurling on the rim of the knob (execution B) makes tightening or clamping operations easier.

Standard Elements

Main dimensions

Mounting hole

Weight

Description	D	L	d ₁	l ₂	d	h	g
GN 676.5-21-M4-A	21	18	12.5	10.5	M4	10	26
GN 676.5-21-M4-B	21	18	12.5	10.5	M4	10	26
GN 676.5-21-M5-A	21	18	12.5	10.5	M5	10	26
GN 676.5-21-M5-B	21	18	12.5	10.5	M5	10	26
GN 676.5-25-M6-A	25	22.5	14.5	14	M6	12	42
GN 676.5-25-M6-B	25	22.5	14.5	14	M6	12	42
GN 676.5-25-M8-A	25	22.5	14.5	14	M8	12	42
GN 676.5-25-M8-B	25	22.5	14.5	14	M8	12	42
GN 676.5-31-M8-A	31	27	18.5	17	M8	15	79
GN 676.5-31-M8-B	31	27	18.5	17	M8	15	79
GN 676.5-31-M10-A	31	27	18.5	17	M10	17	75
GN 676.5-31-M10-B	31	27	18.5	17	M10	17	75



ELESA and GANTER models all rights reserved in accordance with the law. Always mention the source when reproducing our drawings.

STANDARD MACHINE ELEMENTS WORLDWIDE